

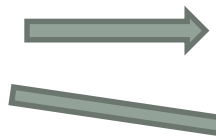
DEVELOPING COMPACTS

CEC NSW Leadership Compact Working Group

Roslyn Crampton
Peter Thomas
Michael Hensley
George Rubin
Belinda Doherty
Paul Long
Harvey Lander
Stephen Hampton

Medical Engagement

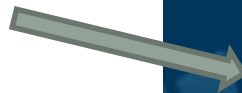
The Theory



The Evidence



The Objective



2.7 Staff and Stakeholder Engagement

A key component of the framework is the ability of a Health Service to engage with staff, and to improve satisfaction and participation across all groups.

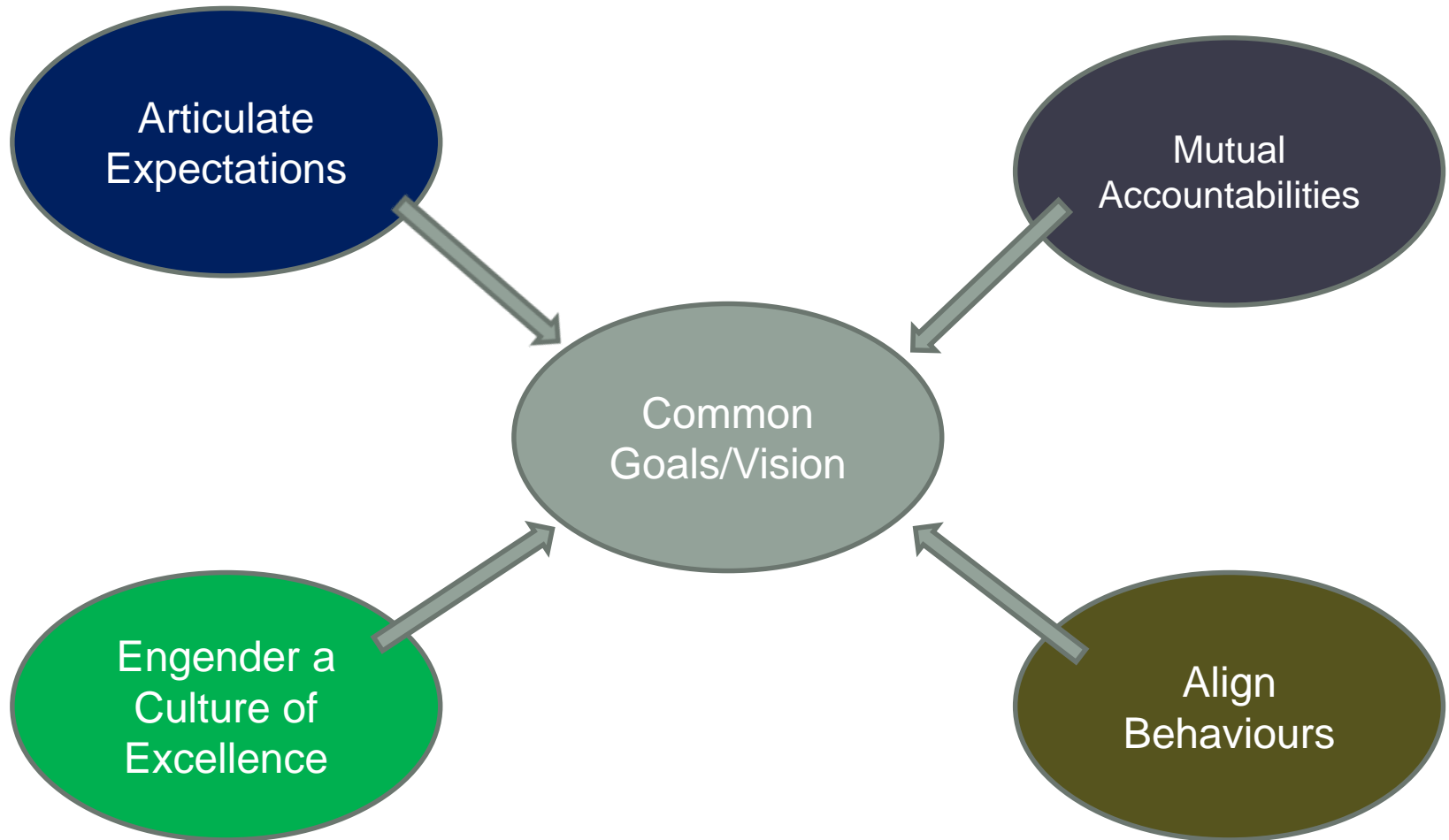
Compacts as a tool

A Compact = An Agreement

A Compact is a tool

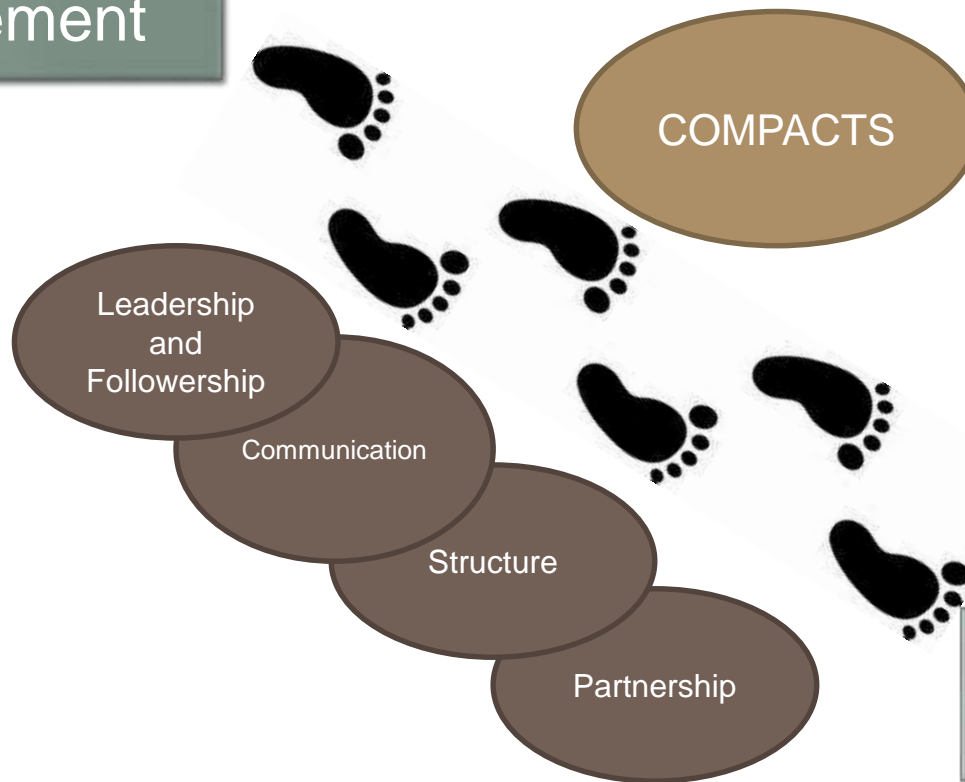
**A Compact is about
safety and quality**

Aims of a Compact



Its about the Journey

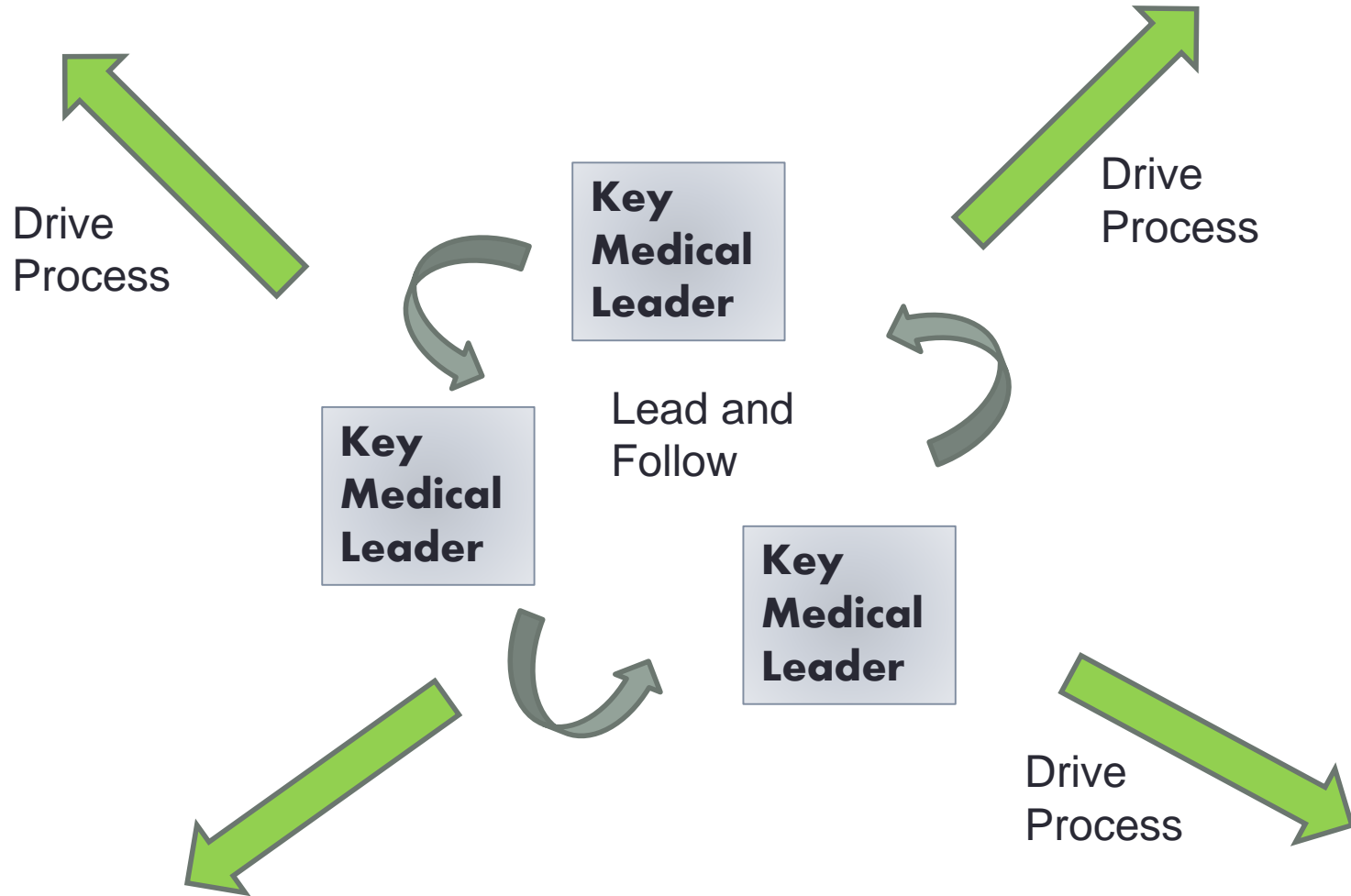
Lower Medical Engagement



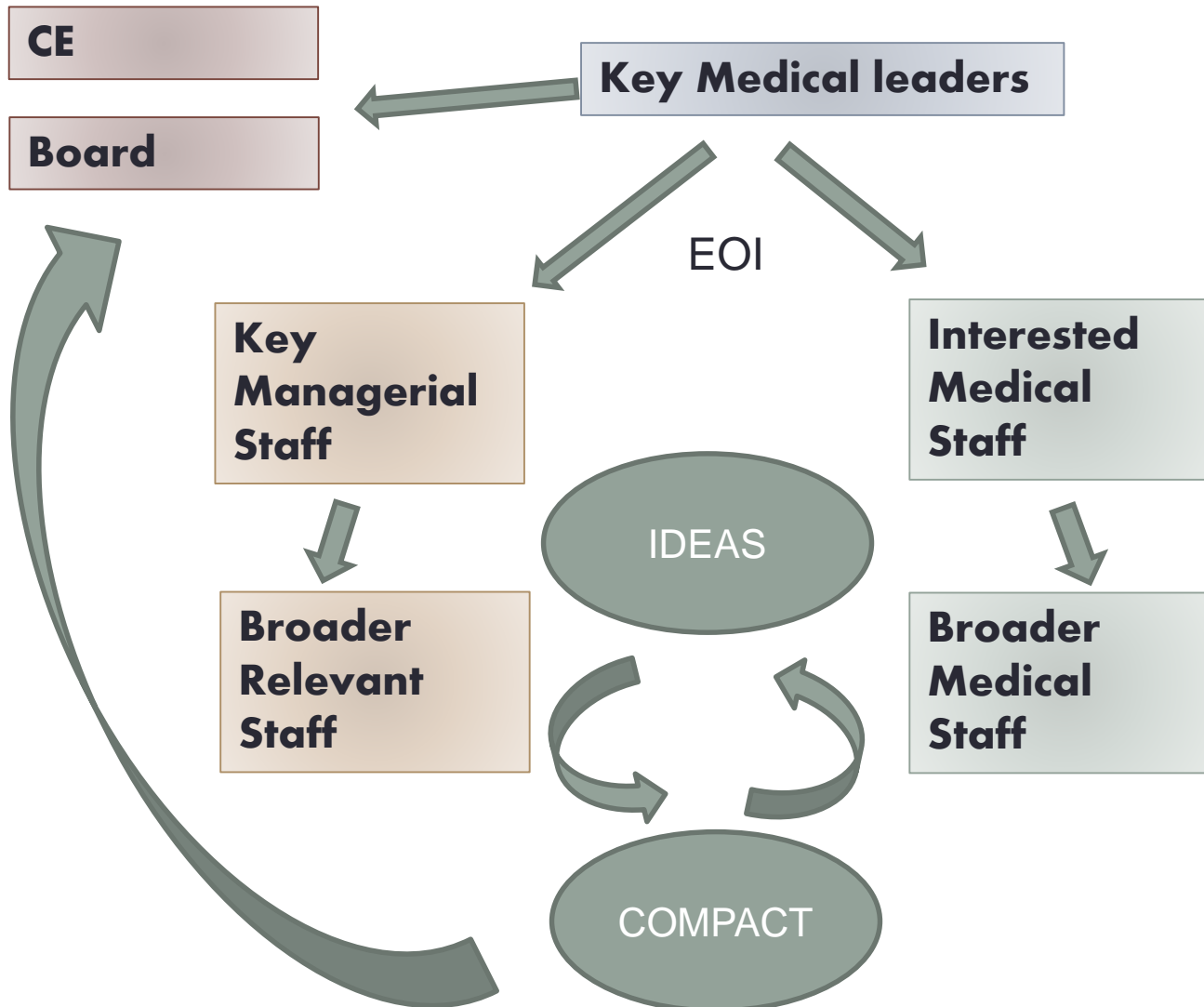
Higher Medical Engagement



Identifying Medical Leaders



Starting the Conversation



Types of Approaches

CORE:

Collaboration

Openness

Respect

Empowerment

Responsibilities

Commitment to our Patients

Commitment to our Colleges

The Commitment of LHD

Specific Accountabilities

Hours

Workload

Quality Targets

Support

Resources

CONCEPTS

Quality Care

Service

Delivery

Partnerships

Excellence

Commitment

Intranet

Communication



Important Notices



Direct Notification

Meetings



Newsletters

Social Media



Keeping it Alive

Standing
Agenda
Items



Put in Strategic Plan



Our Values: Care, Clear Communication, Honesty, Professionalism, Respect



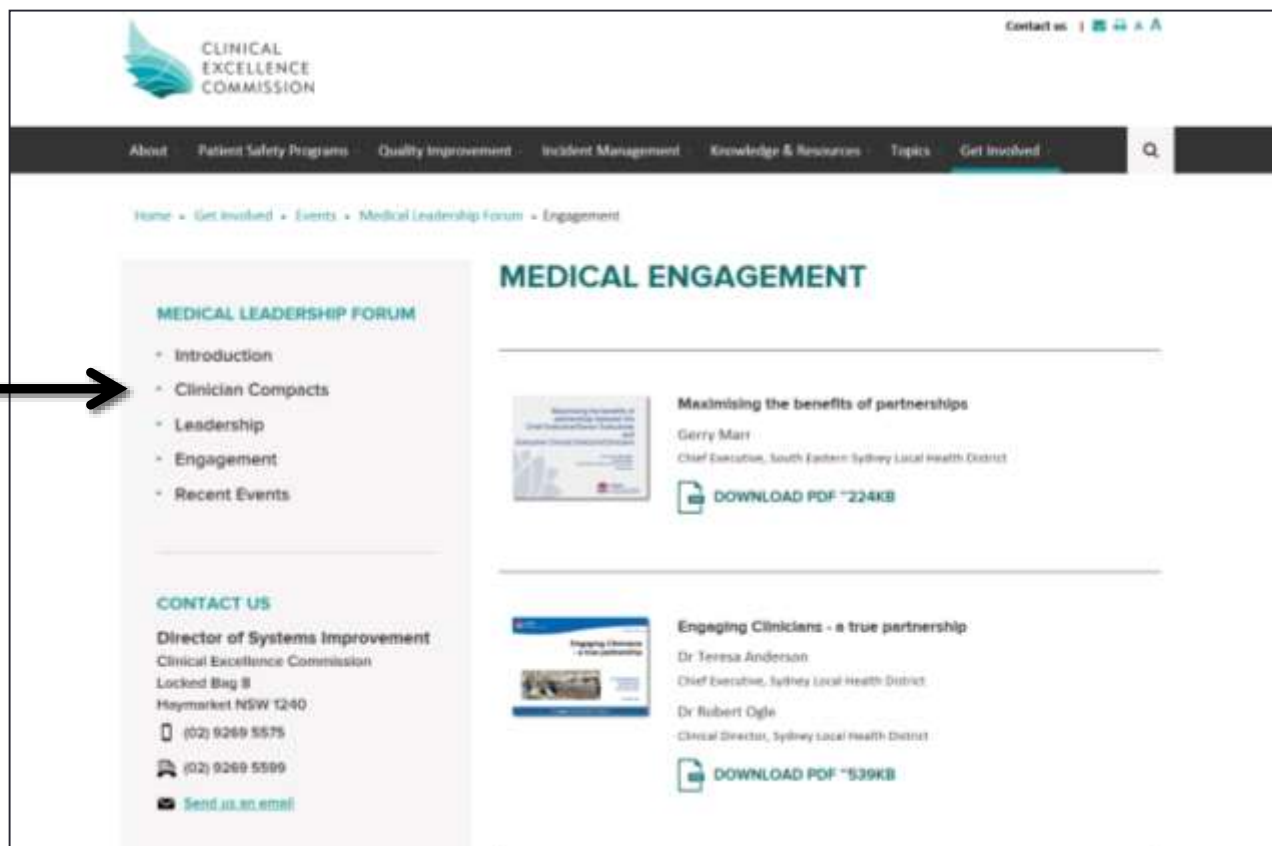
Marketing
Material



Symbolic Signing



Further Information



The screenshot displays the Clinical Excellence Commission website. The header includes the logo and navigation links: Contact us, Home, About, Patient Safety Programs, Quality Improvement, Incident Management, Knowledge & Resources, Topics, and Get Involved. The breadcrumb trail reads: Home > Get Involved > Events > Medical Leadership Forum > Engagement. The main content area is titled 'MEDICAL ENGAGEMENT'. On the left, a sidebar for 'MEDICAL LEADERSHIP FORUM' lists: Introduction, Clinician Compacts, Leadership, Engagement, and Recent Events. A black arrow points to the 'Engagement' link. Below this is a 'CONTACT US' section with contact details for the Director of Systems Improvement. The main content area features two featured articles: 'Maximising the benefits of partnerships' by Gerry Marr (Chief Executive, South Eastern Sydney Local Health District) with a 'DOWNLOAD PDF *224KB' link, and 'Engaging Clinicians - a true partnership' by Dr Teresa Anderson (Chief Executive, Sydney Local Health District) and Dr Robert Ogle (Clinical Director, Sydney Local Health District) with a 'DOWNLOAD PDF *539KB' link.

<http://www.cec.health.nsw.gov.au/get-involved/events-and-webinars/medical-leadership/engagement>