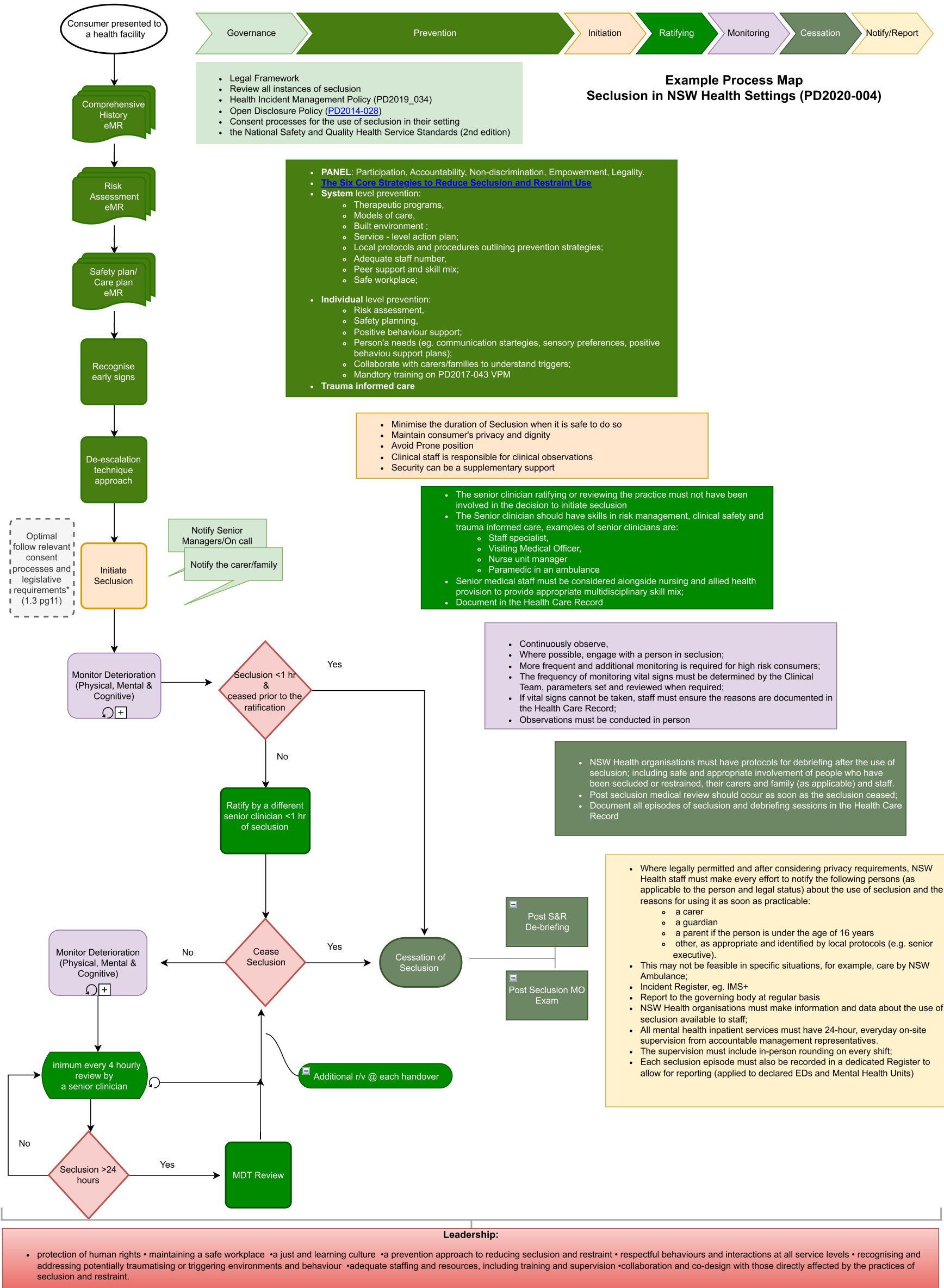


Seclusion Reduction Quality Improvement - Process Map example



Definition: Seclusion - The confinement of a person, at any time of the day or night, alone in a room or area from which free exit is prevented

* This is an example only aiming to guide users at the health service level to build their process. Not a real nor ideal process. The process maps is developed based on " Seclusion in NSW Health Settings (PD 2020-004)

Seclusion Reduction Quality Improvement Toolkit - Process Map Example
Released 2022 Mental Health Patient Safety || Clinical Excellence Commission