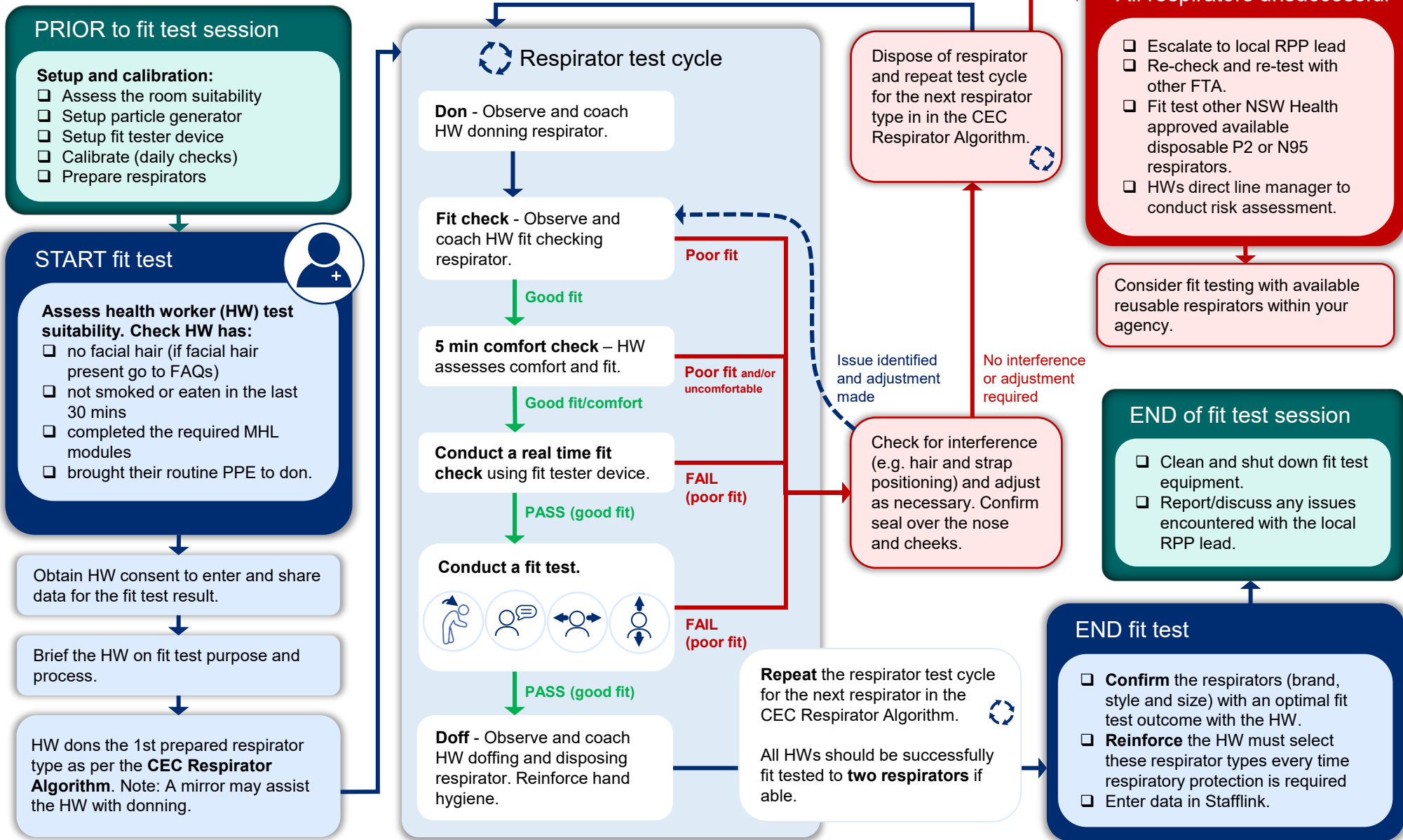


Fit Test Assessor: Quick Reference Guide

Version 1.2 (28/04/2022)



Fit Test Assessor: Demonstration videos

Version 1.2 (28/04/2022)



Note: All videos below can be viewed on the **Clinical Excellence Commission** YouTube channel.

Scan the QR codes below with your mobile to view demonstration videos.

Video 1: Fit test device preparation and setup



Video 3: Cleaning and storage of fit test equipment



Fit testing of P2/N95 disposable respirators



Video 2A: PortaCount fit test device



or

Video 2B: AccuFIT fit test device

